

Diffuse  
M18x1  
Sn = 1000 mm

**Common Data**

Sensortype	Diffuse
Switching frequency	1 kHz
Rated operating distance Sn	mm 1000
asured operating distance Sa	mm Sn adjustable
Repeat accuracy	< 5% from Sn
Hysteresis	< 10%
Indication supply voltage	yes
Indication switching element	yes, yellow LED
Indication special function	Yes, red LED
Ambient temperature	°C -5...+55°C
On/Off-delay	< 0.5ms
Light	Infrared
Sensitivity adjustment	Poti
Blind zone / mln reflectore distance	1 mm
Permissable ambient llight	lux 1000

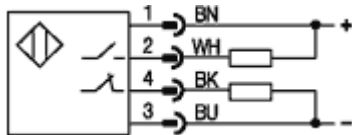
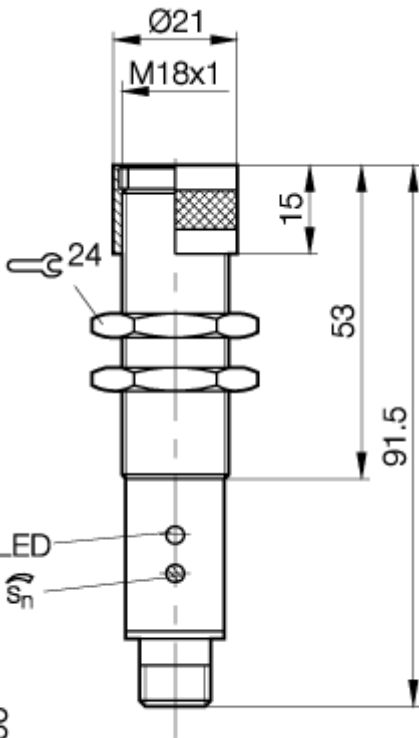
**Mechanical Data**

Measurements BxHxT or DxT	mm	M18x91,5
Shock test (EN 60068-2-27)		Halfsinus, 30gn, 11ms
Vibration test (EN 60068-2-6)		10...55Hz, 1,5mm Amplitude 3x2h
Housing material		nickel plated brass
Material of sensing face		PMMA
Degree of protection	IP	IP65
Connection		Connector S4 (M12)
Weight		100g

**Electric Data**

Current	DC
Switching function	switchable
Output	PNP/NPN
Rated operational voltage Ue	V 24V DC
Rated operational current Ie	mA <200mA
Supply voltage	V 10-30V
Ripple	% < 10% from UB
No-load supply current	mA <45mA
Voltage drop	V <2,5V
Short protection	yes
Protectde against polarity rev	yes
Rated Insulation voltage	75V DC
Output resistance	-
max. load capacity	1µF

21.01.2004 / Online-Information



If not dfferently indicated,  
all values by IEC 947-5-2 (DIN EN60947-5-2)

Sensing distance measured with :  
Kodak white card 100mm x 100mm, 90% reflection  
Specifications subject to change

Balluff GmbH  
Postfach 1160  
73761 Neuhausen  
Telefon (07158) 173-0  
Telefax (07158) 5010