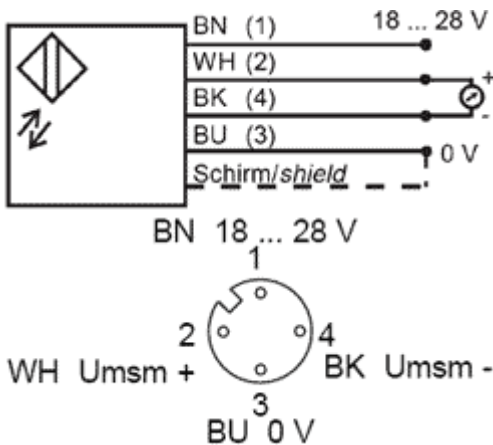
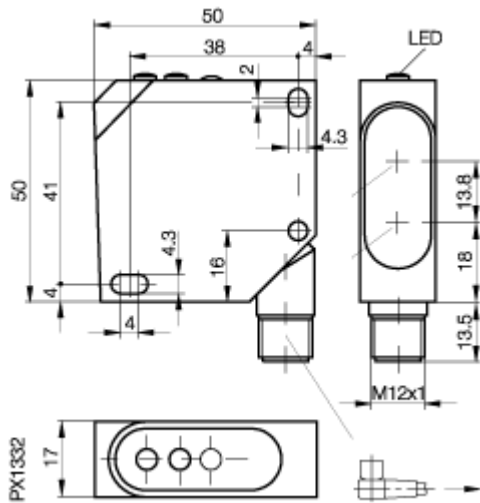


## distance sensor

### BOD 26K-LA01-S4-C



## Description

The Balluff distance sensor BOD 26K not only detects the presence of objects, but can also indicate their precise position or location.

## Specifications

Type	Laser distance sensor, voltage output
Working range	45...85 mm
Analog output	0...10 V (max. 3 mA)
Ambient temperature	0...+45
Temperature drift	18 $\mu\text{m}/^\circ\text{C}$
Light source, colour	Laser, red, 670 nm
Resolution	80 $\mu\text{m}$
Linearity	$\leq 1\%$
No-load supply current	$\leq 35\text{mA}$
Light spot diameter	$\leq 0.8$ mm at 65 mm
Supply voltage	18...28 V DC
Short circuit protection	yes
Inverse-polarity protection	yes
Supply voltage indication	LED green
Stability indication	LED red
Limit frequency	400Hz
Dimensions	50x50x17
Connection	M12 connector, 4-pin
Permissible ambient light	EN 60947-5-2
Degree of protection	IP67
Weight	40g
material	impact resistant ABS
Optical surface	PMMA
Recommended connector	only with BKS-S 19-14-PU-05

Balluff GmbH  
 Postfach 1160  
 73761 Neuhausen  
 Telefon (07158) 173-0  
 Telefax (07158) 5010  
 05.10.2004 / Online-Productinformation