

**distance sensor**  
**BOD 26K-LB04-S115-C**

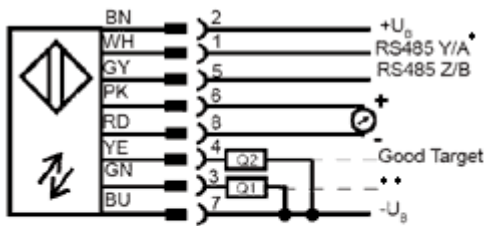
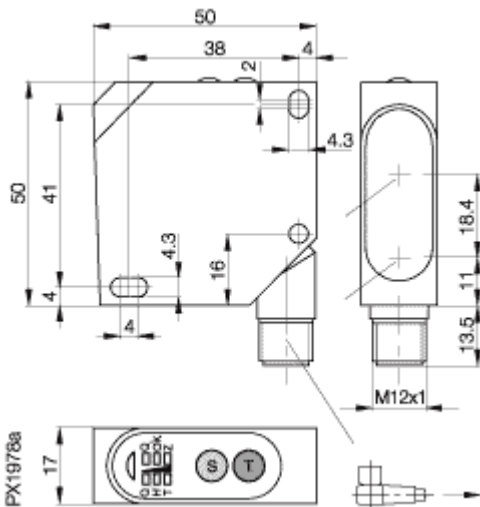


**Description**

The Balluff distance sensor BOD 26K not only detects the presence of objects, but can also indicate their precise position or location.

**Specifications**

Type	Laser distance sensor, analog output current
Working range	30...100 mm
Analog output	4...20 mA
Ambient temperature	-10...+60 °C
Switching output/ type	2 x PNP-Transistor / light-on or dark-on
Light source, colour	Laser, red, 650 nm
Resolution	≤0.1 % of full scale
Linearity	≤0.25 % of full scale
output signal	PNP
Light spot diameter	1,5 mm x 3,25 mm
Supply voltage	18...30 V DC
Short circuit protection	yes
Inverse-polarity protection	yes
Supply voltage indication	LED green
Output function indication	LED yellow
Frequency of operating cycles f	1 kHz
Dimensions	50x50x17
Connection	M12 connector, 8-pin
Permissible ambient light	EN 60947-5-2
Degree of protection	IP67
No-load supply current	≤40 mA
Weight	43g
material	impact resistant ABS
Optical surface	PMMA
Recommended connector	BKS-S 139



\* Nur Variante -LBR  
 Only variant -LBR

\*\* Ext. Trigger/ Eingang Konfiguration  
 Input configuration

**Particular Characteristics**

Teach-in

Balluff GmbH  
 Postfach 1160  
 73761 Neuhausen  
 Telefon (07158) 173-0  
 Telefax (07158) 5010  
 14.12.2004 / Online-Productinformation

**BALLUFF**